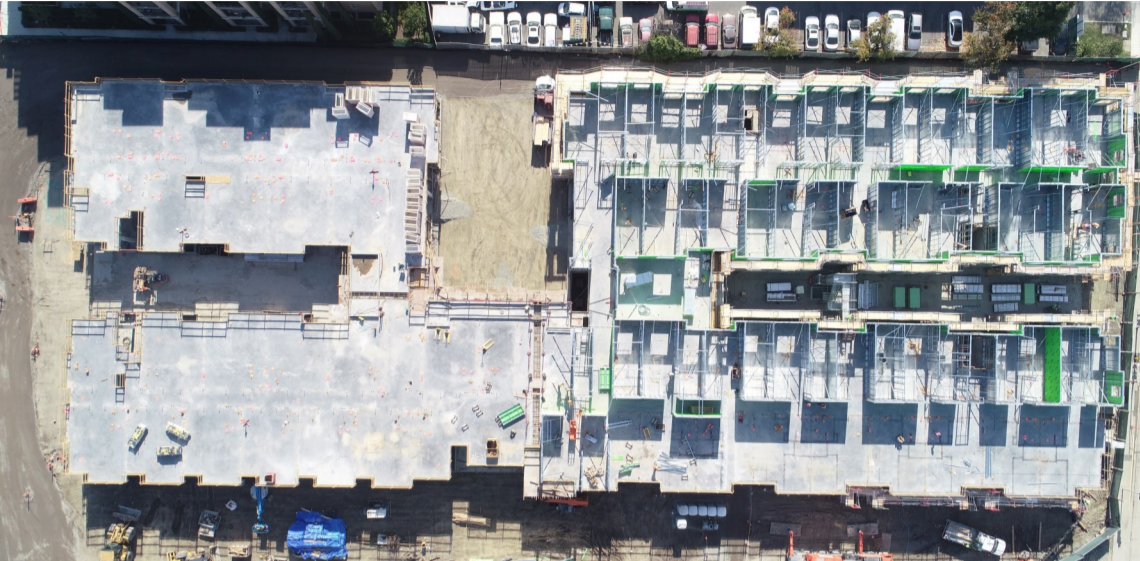


Construction Notice

South Main Senior Lifestyles | 1620 S. Main St. | Construction Update 1/7/19



About the Project

South Main Senior Lifestyles is a 199-unit Assisted Living facility, consisting of 171 Assisted Living units and 28 Memory Care units. The project sits on 2 acres and will be 4 stories tall with one level of underground parking. The project amenities include three large courtyards, an indoor pool, exercise/therapy facilities, theater, commercial kitchen and dining, activity center, salon and library.

Scheduled completion date is March 2020.

Scheduled Work:

Dates: 1/7/19–1/31/19

All of the site's major structural concrete was completed in December and framing layout will continue for Levels 1 and 2 throughout January. Additional concrete work such as the slabs for the garage and east courtyard and the concrete masonry unit wall between neighboring businesses will begin at the end of the month. Pool rough-in for mechanical, electrical and pool equipment will start the second week of January and will continue through the month and into early February.



Planned Street Interruptions

There will be periodic traffic delays on South Main Street from 9am to 5pm, Monday through Friday due to street work for offsite utilities. Please note that a large crane will be on site for layout of panelized walls and other equipment/materials. For any issues, please call (669) 207-9975.

Safety:

We apologize for any inconveniences throughout the construction process. The safety of all employees, neighbors and the general public is our number one priority. Please be aware of changing conditions in the public right of way as sidewalk and street conditions are ever changing. Heavy equipment is entering and exiting the jobsite regularly. Please be aware of your surroundings and help us keep this project safe and free of injury. Thank you.

Contact Us

Trevor Ashenbrener
Senior Project Manager
509.944.4568

Peter Friis
Project Manager
209.666.7715

Brian Kopelowitz
Superintendent
425.232.7471

Kim Do
Project Engineer
408.649.4231

Hours of Operation

7:00am - 7:00pm

Monday through Saturday

Work outside of permitted hours may occur on a case by case basis as approved by Building Services Department.

SRM
CONSTRUCTION

Check back at www.srmdevelopment.com/milpitassmsl for continued updates and project information.